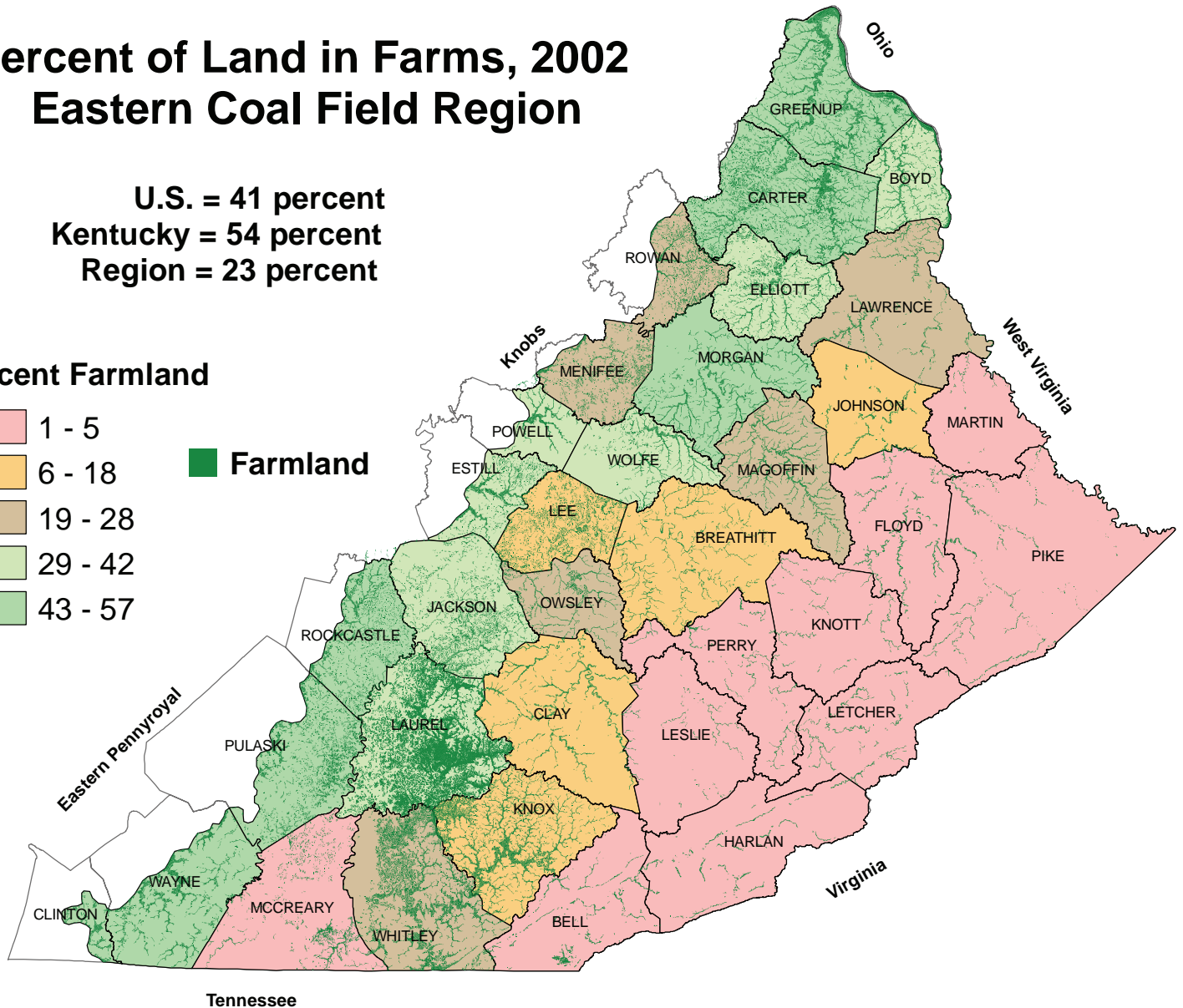
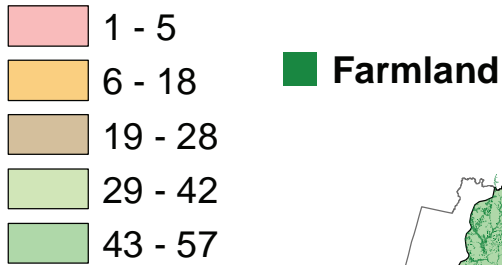


# Percent of Land in Farms, 2002 Eastern Coal Field Region

U.S. = 41 percent  
 Kentucky = 54 percent  
 Region = 23 percent

## Percent Farmland



For the most part, farmland in the region lies adjacent to streams. About 7 million pounds of tobacco were grown on bottomlands in the region in 2006, and 75,000 head of cattle were pastured.